



Stay Safe & STAY ORGANIZED LUXURIOUSLY!

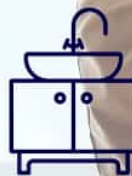
Stainless Steel & Galvanized Steel Interior Fitouts



Modular Kitchens



Wardrobes



Vanity Counters



Steel Furnitures

www.lussario.com

About Lussario

Lussario is a Trademarked Brand from the house of Hygiene Kitchens which comes under the group of SG Equipment and Machines Pvt Ltd, a pioneer in commercial kitchens with 25+ years of expertise in commercial kitchens for international chains of hotels, restaurants, food factories, and hospitals.

The company is committed to providing quality products and services as reflected in every attempt, right from domestic modular kitchens to highly sophisticated commercial kitchen projects in terms of Design, Manufacturing, Supply, Installation, Testing, and commissioning. In addition, its well-defined and highly automated manufacturing process makes it indispensable, producing world-class products in the true sense.

We are proud to bring you the finest products, we have multiple brands for kitchens, metal fittings, stone and glass shutters, customized equipment, and customized refrigerators.

Our Infrastructure Facilities

We are crafting modular kitchens and bringing innovation in various types of home interiors that are built with international standards. With a 60,000+ square feet area of state-of-the-art manufacturing facility located at Peenya Industrial Area in Bengaluru, we are equipped with some of the most modern and high-end technology; and highly skilled manforce to cater to all domestic & industrial needs of steel interiors.



Our Vision

Our vision is to be a reputable, sustainable, and desirable premier luxurious interior fit-out manufacturer providing state-of-the-art innovative designs and superior quality finishing using Stainless steel, GI & Glass Materials at a highly competitive cost. We will continue to leverage our many years of professional experience to consistently deliver exclusive design services that bring complete satisfaction to our partners' and clients' requirements. This vision has been the core of our history and cultural value of design which is still the master key for our prospects.

Our Mission

Our mission is to create a reward experience and value that combine functionality with high quality and innovation for our customers. We want every partner and client experience to be the talk of a lifetime. Also, to define the most sophisticated and superior standard of quality in every exterior and interior design.

We will offer

Sophisticated, durable designs that are built with superior quality materials to last a long time.

We will create

Masterpieces and incorporate unique features that the client cannot get from the competition. Our creativity and seamless service lead, that is why we don't compete on the market in price.

We will operate

With integrity, Honest and transparent processes from start to finish.

We deliver

Our promise providing the best of the best of designs with the top-most quality.

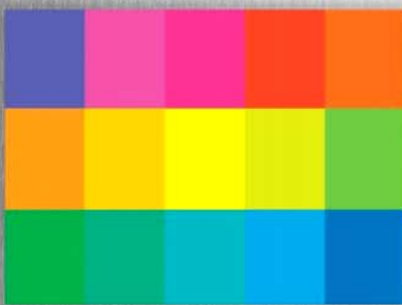
Our Timeline of Growth



Our Customized Solutions

Our design and production facility located in Peenya, Bengaluru is having a shop floor of 20,000 square feet area with state-of-the-art technology and facilities that are supported by 100+ highly experienced skilled manpower.

With more than two decades of experience in the stainless steel fabrication industry, We have the potential to cater to every customized requirement of clients.



Over 300+ shades of powder coating & PU colours to choose from.



The entire spectrum of RAL shades in glass glossy and matt finishes.



Over 35+ variety of stone texture finishes for the cladding shutters.



Our Product Advantage



25+ years of manufacturing experience



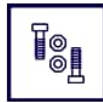
A variety of finishes to choose from



Water-proof & Rust-proof products



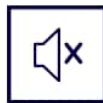
Free from fungus & termites



Heavy duty panels & sturdy fittings



CNC fabricated modular construction



Noiseless operation



Customised solutions



Unmatched quality & precision



Maintenance-free & infinite life

Stainless steel is the only internationally accepted food-grade material that is highly recommended to be used in kitchens. It is an ideal material for domestic settings where it is easy to clean and biologically neutral. It is also an eco-friendly product that is 100% recyclable. An eternal material, one that is charming and functional and that ages slowly without losing any of its characteristics

Why choose Steel?

Key Features	Ply / MDF / WPC / Wood	Steel
Moisture Resistance	✗	✓
Fungus/Termite Resistance	✗	✓
Hygienic	✗	✓
Resale / Scrap Value	✗	✓
Toxic Atomisation	✓	✗
Product Life / Sustainability	Maximum 10 Years	25+ Years





STAY ORGANIZED
LUXURIOUSLY

www.lussario.com

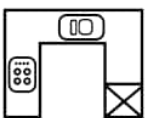


Modular Kitchens

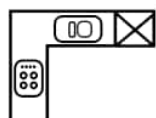


Lussario has been reinventing the workspace in the kitchen with a number of innovative ideas for stainless steel home interiors that are unmatched in craftsmanship, unsurpassed quality, trend-setting designs, and long durable material. Lussario ensures the highest standard of quality on every stainless steel modular kitchen product that moves out of our state-of-the-art manufacturing facilities.

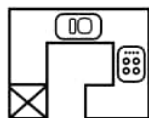
Typical Kitchen Layouts



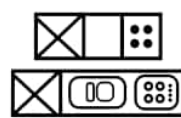
U-Shape



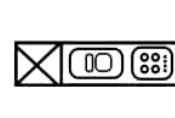
L-Shape



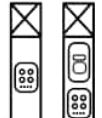
G-Shape



Island



One Wall



Parallel





We offer Bespoke Modular Kitchen Solutions with multiple options for the carcass, doors, and work-tops. We use Stainless steel and GI powder-coated materials for Carcass and Glass glossy or matt materials for Doors.

Cabinet Options

- Stainless Steel 304 Grade
- GI Powder Coated

Countertop Options

- Granite
- Ceramic
- Quartz
- Stainless Steel

Door Options

- Stainless Steel
- Steel PU Coated
- Glass Matt
- Glass Glossy
- Stone
- Solid Wood

Wall Cladding Options

- Granite
- Quartz
- Ceramic
- Lacquered Glass
- Stainless Steel





WELL PLANNED &
OPTIMALLY DESIGNED
WARDROBES

Modular Wardrobes

Modular Wardrobes by Lussario are thoughtfully crafted to make the most of your space. We offer customized solutions to your specification that perfectly matches your lifestyle, and creates a lasting impression.

Hinged Door Wardrobes

Cabinet Options

- Stainless Steel 304 Grade
- GI Powder Coated

Door Options

- Steel PU Painted
- Framed Glass
- Steel Powder Coated
- Stone Cladded Steel
- Solid Wood Doors

Sliding Door Wardrobes

Cabinet Options

- Stainless Steel 304 Grade
- GI Powder Coated

Door Options

- Lacquered Glass
- Steel PU Painted
- Framed Glass
- Graphic Printed Glass / Steel



Vanity Counters



Lussario offers tailor-made vanity counters in Stainless Steel & GI which can be used in any wash area. These vanity counters come as a wall-mounted type or standalone type with granite or quartz top, drawers, or doors that can be given a glass finish or PU finish.

Vanity Options

- Stainless Steel Cabinets with Glass
- Stainless Steel Cabinets with PU finish
- Stainless Steel Doors
- Granite / Quartz Counter Top

Other Steel Furnitures

We offer tailored solutions in Stainless Steel to help you design your home interiors with highly durable, sleek and stylish furnitures that imbibe your personality.

TV Units



Crockery Units



Display Items



Dining Tables



Door Options

We offer a stunning range of cabinet shutters enhanced with an array of materials & finishes.



Stainless Steel Doors



Digital Glass Doors



Stone Cladded Doors



Solid Wood Doors



PU Coated Doors



Glass Profile Doors



Glass Glossy & Matt Finish Doors

Hardware & Fittings

Lussario consciously crafts our products and uses the products from time-tested brands for all our hardware, fittings, and accessories.

Brands we use for Hinges, Drawer Slides & Lift-up's



Brands we use for Kitchen & Wardrobe Accessories



Brands we use for Kitchen Sinks



Brands we use for Countertops





Contact Us

Franchise:



Shop No. 7, Sampath Complex, Opp. HDFC Bank, Dommasandra
Sarjapura Main Road, Bangalore-125

Tel: +91 98452 78306 | solanabangalore@gmail.com | www.lussario.com



1800 572 1691



www.lussario.com

Karnataka | Kerala | Telangana | Tamil Nadu | Andhra Pradesh | Dubai